



RAIL

NEWS

FOUNDED 1993

HAPPY NEW YEAR 1998

WINTER EDITION

The 'PREZ' SAYS:

"1997" YEAR IN REVIEW

by Paul Haase, President

To the membership of the Santa Clara River Valley Railroad Historical Society:

As 1997 fades and another year begins, let us look back through this past year at all of the wonderful things which have happened to make our Society grow.

To start the year off, January saw your Board of Directors vote to have old S.P. caboose #1119 moved from the yard track over to the piece of up track which had been laid nearly a year before. Caboose #1119 actually belongs to former SCRVRHS President and now owner of the Fillmore and Western Railway, **David Wilkinson**. He has loaned it to us to use as a display. The caboose, built in 1942 for the S.P.R.R. was used both on main lines and the Mountain Division before it was used on freights here along the Santa Paula Branch Line. In 1970 it was sold to a scrapper, but somehow evaded his torch, and Dave picked it up in Mojave and it eventually ended up here in Fillmore. Members **Steve Pierce**, project chairman, **Dave Jeffrey** and others have spent untold hours since the move to refurbish the caboose inside and out. Soon, it will be repainted. It will be used as a field office for the building of our soon-to-be turntable and Interpretive Center.

The next big thing which happened is that our 2nd Annual Rail Festival was a "hit" here in town. There were nearly 5,000 extra people here to join us to see steam railroading in action and other events. Other mainline events included the May "Orange Festival" & the 4th of July. The fall season brought great Pumpkin Trains which we staffed with Car Attendants. Christmas time saw the staffing of Christmas Tree Trains as well as loading and unloading of the Christmas Trees for customers. A successful year indeed!

One group of people who we do not want to forget are the Bar-B-Quers under the fine



— Photos by Rick Swanson

direction of **John Gartman**. Besides each of the main event Bar-B-Quers which were held they also did special events, such as a Model A club, the Santa Paula Memorial Hospital Annual Bar-B-Que in September, and also a special Bar-B-Que for the Southern Pacific Railroad Technical and Historical Society. Our crew puts out a Tri-Tip Sandwich with grilled onions which is getting a great reputation with everyone.

The most momentous occasion of the year was November 9th; the day our turntable rolled into town. Coming from Capreol, Ontario Canada, this 96' turntable (photo above) represented one of the tallest and longest rail hauls across our continent. We should all be proud to have been part of this brilliant day in our Society. This turntable is phase one of our Interpretive Center, and we hope to have it in the ground in 1998.

Reflecting the history of the valley, a 1957 Pacific Fruit Express ice refrigerator car #11403 was jointly donated to us by Fruit Growers Supply Company and Sunkist Growers. The car is currently sitting on the north track in the F&W yard. The PFE will be a great addition to our Interpretive Center because tens of thousands of these cars wound their way over this Santa Paula Branch Line for over seventy five years.

This next year of 1998 will bring new beginnings into our Society. First, we will be

(Continued on page 2)



CAR ATTENDANT CORNER IHOP ANYONE?

by Fred Ervast

SCRVRHS members are most welcome to join other members who congregate at the International House of Pancakes restaurant in Fillmore on Sundays for breakfast. This 'tradition' started with the result of Car Attendants going to breakfast before starting to work on the Sunday Scenic Limited train aboard the F&W. The Attendants get together around 9:00 am at the restaurant and talk 'railroading' (what else?). Members and their spouses and other interested members are most cordially invited to join in the group. No reservations are necessary. The IHOP restaurant is located on highway 126 near the intersection of highway 23 (next to the Chevron station). See you there!

The 'Prez' Says continued

(Continued from page 1)

starting out the year with a growing membership. Also, with the 1119 project moving (see back page) and the turntable and PFE projects beginning, there will still be much to do. The turntable, as it sits, will need some welding done to strengthen it. Then, it will need to be sandblasted to remove rust and corrosion and painted before it goes into the ground. Contact me, **Paul Haase** (805.524.1607) or **Bill Victor** (818.894.4970) to lend a helping hand.

After the City of Fillmore approves our submitted plans, the grounds themselves must be graded to specification and this will be donated by **Bennett Construction Company** of Fillmore. **THANK YOU!!** Then, as soon as the pit is ready to be dug for the table, **Paul Hofmeister Construction** of upper Ojai has donated his services for this. **THANK YOU PAUL!!** **Fillmore and Western** will install the basic switch and a portion of the lead track and we will finish it up. If we could find 50 tons of 1 1/2" crushed rock and have it hauled in it sure would save us money. Anything we can do to save bucks on the project will be to our benefit.

This next year, our third annual **Rail Festival** will again be our **BIG** event and money provider. The dates (mark them on your calendar) are March 14th and 15th. A "Planes, Trains and Automobiles" type event in Santa Paula will be held just 3 weeks later on the 3rd & 4th of April. Then, on Monday, April 27th, we, along with the Fillmore Historical Society, will be hosting **THE ASSOCIATED HISTORICAL SOCIETIES AND MUSEUMS OF VENTURA COUNTY** to a fun day. After a meeting in the Fillmore Theatre at 9:00 a.m. we will provide tours of our SCRVRHS Park, and then feed them a Tri-Tip lunch at the F&W's new Bar-B-Que site. We will need plenty of members to make all of these functions, and more, a success. I'll say it again, as the year rolls along we will need lots of help.

One group of people whom I want to congratulate and thank are the **Car Attendants**. You people have done a magnificent job. **THANK YOU!!** **Mike Martin**, who heads the program and who has had **Paul Jacques** doing a lot of the searching for members to fill the spots both have done a fine job this past year. Mike tells me that he and **Rick Swanson** are in the process of revamping the whole program to make it even better and more rewarding. Good Luck guys!

One last note of interest is that **Mr. A.J. Farrar**, a long time member of our Board of Directors left our Board on January 1 to work for Fillmore and Western. A.J., we all want to thank you for your many hours of dedication and hard work. You will be missed.

This is all I have for the membership at this time. I do want to thank all of you for your efforts and wish all of you a Happy and Prosperous New Year.

SCRVRHS GOODIES!

T-SHIRTS - \$12.
PINS - \$4.
BASEBALL HATS - \$10.

ARE NOW AVAILABLE
FOR PURCHASE WITH
OUR NEW COLOR
LOGO!

SUPPORT YOUR
SOCIETY!

Call **Fred Ervast** at
805.389.0787



RAILNEWS®

Published quarterly by The Santa Clara River Valley Railroad Historical Society, Inc., a 501 (c)(3) non-profit organization. Annual Dues \$35 per Individual, \$50 per Family

EDITOR - RICK SWANSON

CONTRIBUTORS TO THIS ISSUE:

Paul Haase, Mike Martin,
Steve Pierce, Fred Ervast

Contributions are welcome! Send articles, photographs, drawings, or information (preferably on IBM computer disk) to:

RAIL NEWS
448 Sespe Avenue
Fillmore, California 93015

BOARD OF DIRECTORS

Paul Haase, President
Pat Askren, Vice President
Sheila Hoffman, Recording Secretary
Joseph Kern, Esq., Treasurer
Rick Swanson, Public Relations
John Gartman
Troy Helton
Mike Martin
Roy Payton
Christopher Robson

MEETINGS

Board of Directors meets on the first Wednesday of each month at 7:00 pm at Fillmore City Hall. General membership meets on the second Wednesday of each month at 7:00 pm. also at City Hall. Call (805) 524-1201 for info.

INTERNET ADDRESS

www.fishnet.net/~johngart

STATEMENT OF PURPOSE

It is the purpose of this organization to assist in the preservation of the railroad corridor between Montalvo and Saugus, California, so as to maximize the economic, educational, environmental and recreational value of this unique historical asset to the residents of the Santa Clara River Valley and the surrounding area. To this end it is the intent of this organization to acquire, preserve, restore, exhibit and operate historic railroad equipment, and to acquire, preserve, display, and make available for study, artifacts, information and photographs pertaining to railroad equipment, structures and operations in the Southern California region.



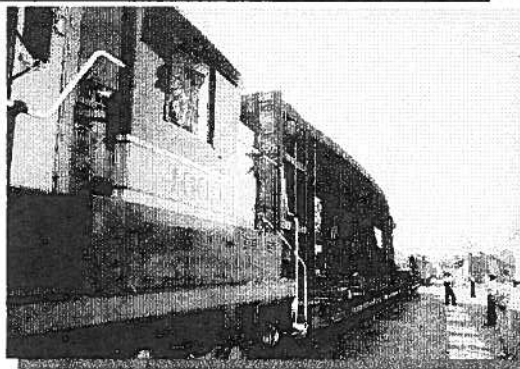
OUR TURNTABLE MAKES IT'S 'LONG' DEBUT



President Paul Haase addresses members, dignataries and rail fans from the #1119.

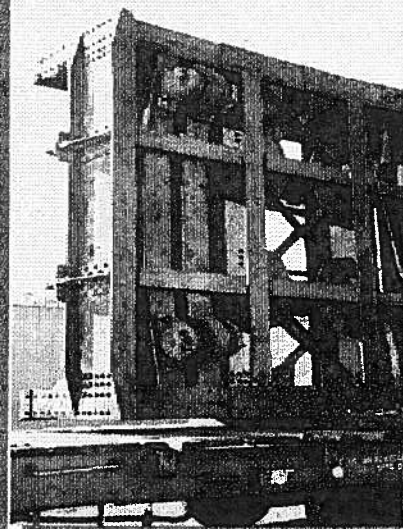
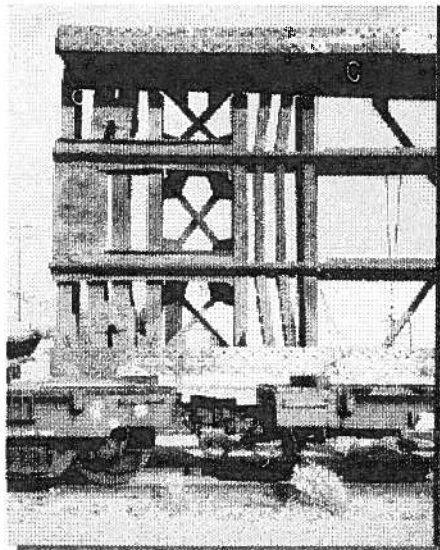


New fundraising sign measures our progress thanks to **Crown Dodge** of Fillmore.

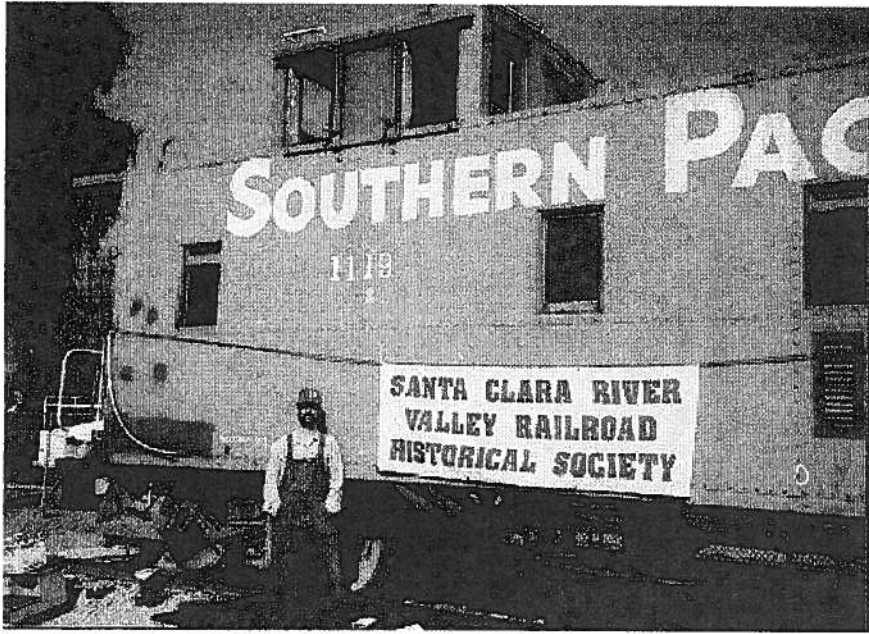


F&W engineer and Society member Jim Treloar slides flatcar CN 667442 and its companion into position at the RIC site.

How do you put a 96' turntable on a 89' flatcar? Easy, let it hang over a companion car! The second flatcar had to be weighted down to allow the table to pivot over its deck without scrapping (see the different coupler heights at right). The motor, ties, bridge and other gear did the job!



Looking at the bottom end of the turntable, the small steel wheels that help move all that weight around can be seen. As the center pivot bearing turns, wheels at each end move on a single circle of track around the perimeter of the turntable pit.



CABOOSE #1119 PROJECT LEADER STEVE PIERCE STANDS BY HIS 'BABY'. THEY'RE STILL PREPPING FOR THE SOON TO BE APPLIED OUTSIDE PAINT, BUT THE INTERIOR WORK IS JUST ABOUT DONE.

— Photo by Rick Swanson

#1119 UPDATE

The Southern Pacific #1119 caboose restoration is steadily progressing and will soon be ready for final painting!! We've received a donation of all necessary paint from I.C.I. Paints in Oxnard for this project. All the structural problems have been tended to and we're now finishing the cosmetic repairs. Also, window frames are being rebuilt off-site and new glass installed where needed.

Our future office received a great deal of attention at the turntable celebration in November (see page 3). It proved itself a valuable tool to introduce visitors to railroading from speeches off the rear platform to walk-through tours during the day. It also gave us a chance to explain our Society history speak about current events and projects coming down the line as well as future plans such as the R.I.C. The future does seem bright for the #1119! We still need help in securing donations of materials such as new wood and bolts for the roof walkway, stair wood, and display materials concerning S.P. cabooses. We would also like to have a set of the marker lights that hang on the four outside corners and a carpet runner to preserve the walkway through the caboose. We hope all Society members will come out and lend a hand with this project, next to the upside down turntable! There's something different going on every Saturday starting at 9 am. For information contact me, **Steve Pierce**, at 805.644.6169. See you there!



RAILNEWS

Santa Clara River Valley
Railroad Historical Society, Inc.
448 Sespe Avenue
Fillmore, California 93015

Bulk Rate
U.S. Postage
PAID
Fillmore, CA.93015
Permit No. 057

**SAVE THE DATES:
3RD ANNUAL RAIL FESTIVAL
MARCH 14TH AND 15TH, 1998**