



YOU'RE INVITED!

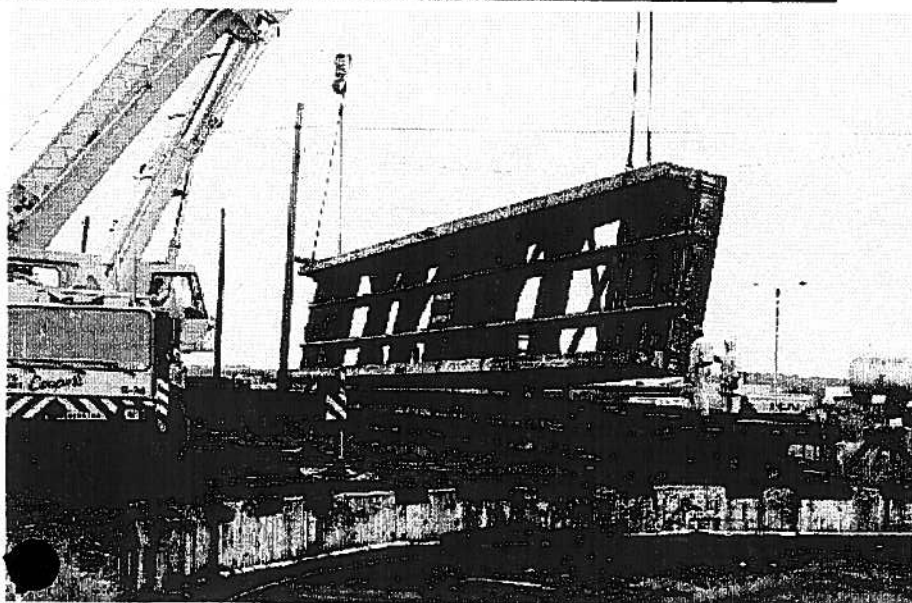
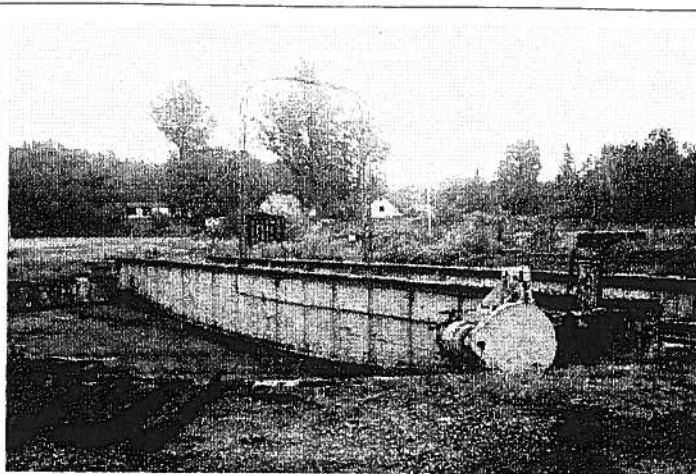
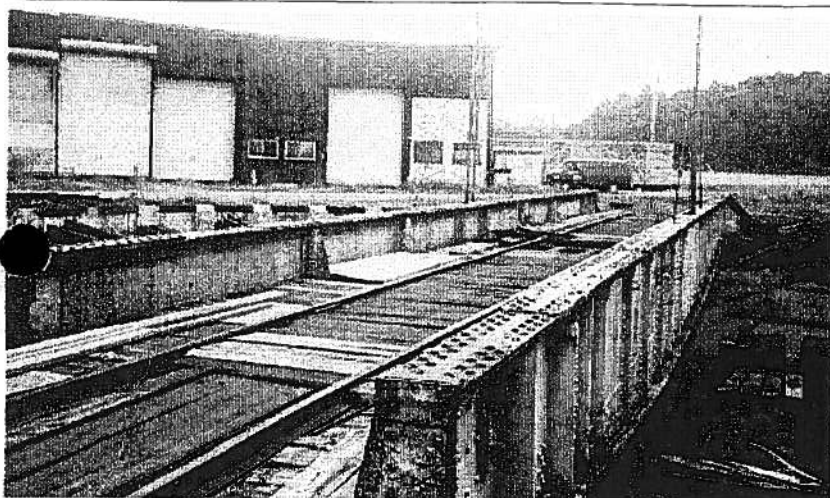
RAILNEWS

FALL 1997

SPECIAL EDITION

SPECIAL GENERAL MEMBERSHIP MEETING

SOCIETY TURNTABLE IS ON IT'S WAY TO FILLMORE TIME TO CELEBRATE!



ABOVE: *SCRVRHS* turntable sits in its original pit at Capreol Canada. Electric motor (circular object) that rotates the table on a circle of track is on the right.

ABOVE LEFT: Still in its pit, a view down the center of the turntable 'bridge'.

LEFT: The 77 ton turntable bridge is lifted by a crane onto waiting 89 foot Canadian National flatcar #667442. Both Roy Payton, *SCRVRHS* Director and professional railroad civil engineer and Dave Wilkinson of the Fillmore & Western went to Canada to inspect the turntable and supervise its loading.

-- Photos by Roy Payton

SATURDAY, NOV. 8TH - 11AM: FILLMORE

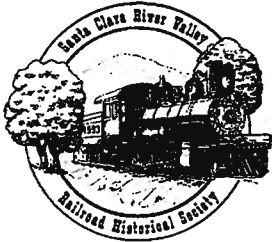


Years of Hard Work Culminate in a Special Delivery: U.P. Hauls R.I.C. Turntable From Canada to Fillmore

FILLMORE - Santa Clara River Valley Railroad Historical Society members are inviting officials and residents of the City of Fillmore, the Fillmore & Western Railway and members of the press to join in celebrating the long awaited arrival of the Society's railroad turntable on Saturday, November 8th at 11:00 am. The festivities will be centered around Southern Pacific caboose #1119 located on the Society's Railroad Interpretive Center (R.I.C.) site at Main and Mountain View across the railroad tracks from City Hall. The focal point of the three phase R.I.C. project, the turn-of-the-century turntable will be stored and eventually installed at this location. Come inspect it!

The ninety-six (96) foot turntable was acquired with the assistance of Dave Wilkinson of the F&W from the Canadian National Railroad. It was purchased with matching funds provided by both the Railroad Society and the City of Fillmore and transported to Fillmore by the Union Pacific Railroad. Originally located in the town of Capreol north of Toronto, the historical turntable was in use as little as six (6) months ago and is complete in everyway. It was mechanically refurbished and it's main pivot bearing replaced in 1995! It became available to the Society when the Canadian National shrunk the Capreol line and sold many components of the line for salvage. The purchase price included the dismantling and loading of the 77 ton turntable by the railroad upon 89' and 62' flat cars for transport to California. Prior to the CN turntables' availability, the Society was negotiating to remove another turntable donated to the Society by the Gateway Western Railway in Kansas City. However, dismantling costs and EPA environmental concerns made its move west financially prohibitive.

To celebrate and continue the fundraising for the turntables' installation, the Railroad Society will have it's famous wood fired tri-tip BBQ sandwiches and all the tasty fixings available. Plans also include a special silent auction of unique railroadiana as well as other special items. Booths will be available with information on Society membership and activities as well as Metrolink displays by the Ventura County Transportation Commission. Of course, the Fillmore & Western Railway will be operating its regular schedule of round trip vintage train rides to Santa Paula. Join the pride of fellow Society members in this grand celebration of 'can do' spirit! Keep the ball rolling and show the community your support through your participation in this, the Society's greatest achievement to date. If you only come to one meeting, *make this it!!*



RAILNEWS

Santa Clara River Valley
Railroad Historical Society, Inc.
448 Sespe Avenue
Fillmore, California 93015

Bulk Rate
U.S. Postage
PAID
Fillmore, CA.93015
Permit No. 057

**SPECIAL TURNTABLE CELEBRATION
SATURDAY, NOVEMBER 8TH - 11:00 AM
FILLMORE - ACROSS THE TRACKS FROM CITY HALL**