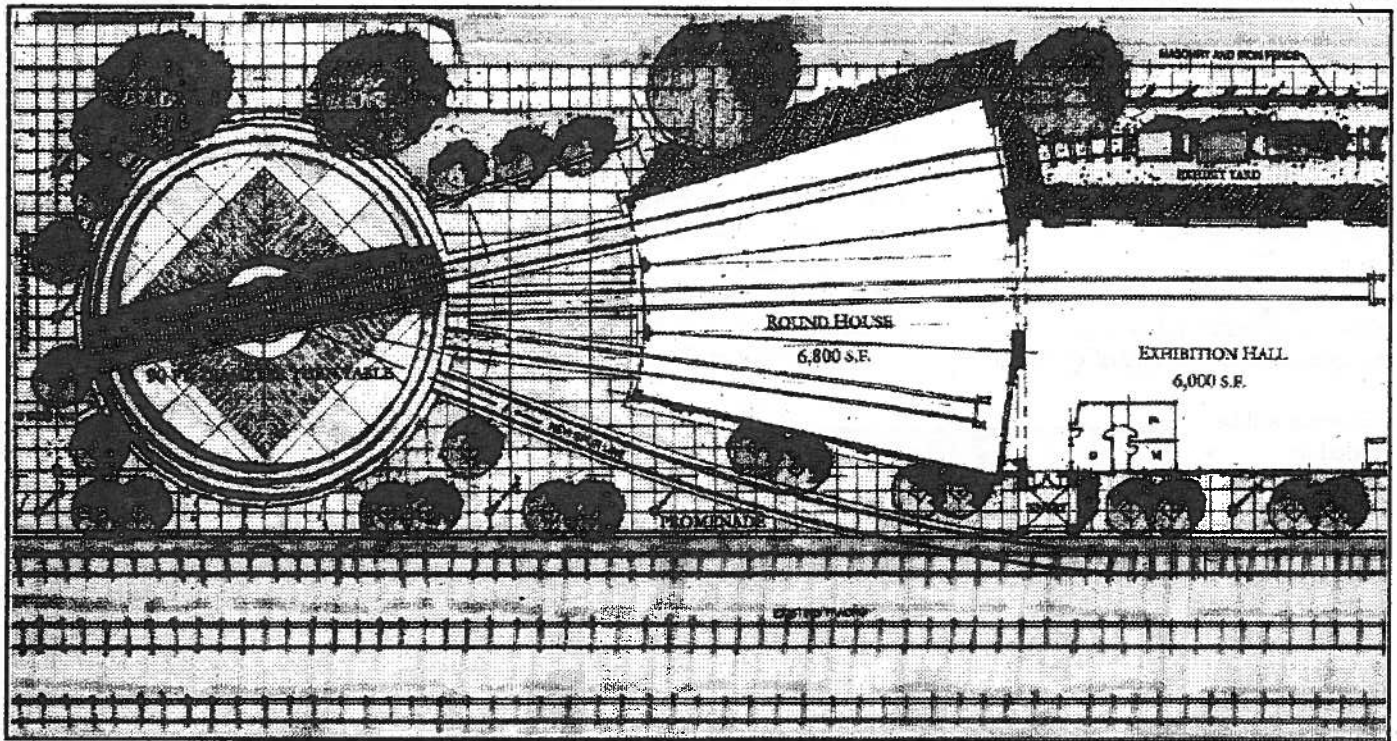




# RAIL NEWS

June, 1995

Number Seven



## THE 'PREZ' SAYS: TURNTABLE PROJECT UPDATE

The Turntable Project is on its way but we still have a long way to go! The City of Fillmore is doing its part to assist the Society in its goal of bringing a 90 foot turntable from Missouri and installing it in Fillmore.

Here's where we stand. Last month the City voted to provide up to \$25,000 in matching funds generated by the Society for the Turntable Project. Additionally the City granted a \$1.00 per year lease on property northeast and adjacent to the existing Short Line yard. USA Petrochem Corporation, which operated a petroleum refinery on the Ojai branch, is very close

to donating track and switches on their property that would more than facilitate our rail needs for the project. Finally, Southern Pacific has granted Short Line Enterprises blanket approval to operate the Fillmore & Western Railway at anytime on the leased branch line.

Although our success to date is remarkable given the short time we have been persuing our goal, most if not all of the work has been accomplished by a handful of dedicated Society members. But they can't be expected to do it all alone.

With the matching funds comes the

challenge to raise our share of \$25,000. If USA Petrochem comes through, we need to remove the track and make arrangements to haul it to Fillmore. When the turntable arrives it needs to go into the ground. As a SCRVRHS member, think about how you can make a contribution in time, effort, or dollars (see MEMBERSHIP on page 2).

This summer the trains are running, the Bar-B-Que is cooking and Society activities abound more than ever before. It's a time for family fun and railroading excitement. Come to Fillmore during the July 4th weekend and get a taste of it all!

### Inside This Issue:

#### SPECIAL VOLUNTEER ISSUE

**Membership: Keeping Up With Everything**  
**Car Attendants Are More Than Just 'Pretty Faces'**  
**Bar-B-Que Crew Contributes To The Bottom Line**

page 2  
 page 3  
 page 4



# MEMBERSHIP

# MORE THAN EVER, YOU'RE NEEDED!

by A.J. Farrar

Our general membership now stands at over 150 people with another 1500 interested in our activities with the railroad. With the approval of our Railroad Interpretative Center (RIC) Project by the City of Fillmore, we are now in need of another category of people who have experience and interest in major capital projects.

Knowledge, skills and expertise in public relations, writing, fund raising, management and a variety of technical

skill areas will be needed to successfully see our RIC Project become a reality. If you have not volunteered your skills and accepted the challenge to become active with the Society -- NOW is the time. Please contact any one of the directors of the Society listed on the masthead of this publication at

**GENERAL  
MEMBERSHIP  
MEETING**

WEDNESDAY JULY 12th  
SANTA PAULA DEPOT  
7:00 PM

SPEAKER: TONY PEREZ  
Fillmore City Planner  
TOPIC:  
Fillmore General Plan and  
the Railroad Complex

Society volunteer positions. Included in these are car attendant (see related article on p. 3), food sellers/preparers, right-of-way workers, restoration specialists, public education specialists and many more.

Training courses are offered by the Society periodically for those in public visibility positions to prepare you for the challenge of working with people in a non-profit organization. In addition, Short Line Enterprises, Inc.

(SLE) which operates the Fillmore & Western Railway has chosen selected members of our Society for part-time employment during the past few months. There is every indication that the scope of these activities will continue to increase which should provide more openings

our mailing address or by leaving a message on our voice mail system at 805-524-1201.

With a full schedule of train activity and fund raising efforts including food sales on board and on the ground, our volunteer ranks are diminished. This means there is ample opportunity for you to contribute in any one of several

as well. Take the opportunity right now! Put down RAILNEWS and call (805) 524-1201 and leave a message. Let us know your area of expertise and interest. We will try to match your desires to our current activities. You will be amply rewarded for your efforts and the Society will continue to grow and expand in 1995. And thank you to all the volunteers who have contributed to date. We really appreciate you!



## RAIL NEWS

Published quarterly by The Santa Clara River Valley Railroad Historical Society, Inc., a 501(c)(3) non-profit organization. Annual Dues \$35 per Individual; \$50 per Family

### EDITORS

Rick Swanson Christopher Robson

### CONTRIBUTORS TO THIS ISSUE

A.J. Farrar Dave Jeffery  
Stephen Schwarzwald

Contributions are welcome! Send articles photographs, drawings, or other information (preferably on IBM computer disks) to:

RAIL NEWS  
448 Sespe Avenue  
Fillmore, California 93015

### BOARD OF DIRECTORS

Dave Wilkinson, President  
Pat Askren, Vice President  
Russ Sperry, Secretary  
Joseph Kern, Esq., Treasurer  
Sheila Hoffman, Historian  
A.J. Farrar  
Paul Haase  
Troy Helton  
Dave Jeffery  
Christopher Robson  
Rick Swanson

### STATEMENT OF PURPOSE

It is the purpose of this organization to assist in the preservation of the railroad corridor between Montalvo and Saugus, California, so as to maximize the economic, educational, environmental and recreational value of this unique historical asset to the residents of the Santa Clara River Valley and the surrounding area. To this end it is the intent of this organization to acquire, preserve, restore, exhibit and operate historic railroad equipment, and to acquire, preserve, display, and make available for study, artifacts, information and photographs pertaining to railroad equipment, structures and operations in the Southern California region.



## CAR ATTENDANT CORNER

# ALL ABOARD!

by Rick Swanson

Think back. Think about the last time you operated your Lionel, HO or N scale model train. Or think back to the last time you were stopped at a railroad crossing and watched as the train passed by. Think again back to the last time you were a passenger on any train: Amtrack, Metrolink, or tourist (even the Fillmore & Western). Haven't you just once thought about how great it would be to be the engineer or even just a member of the crew? Did you ever regret the fact that you abandoned your childhood dream of 'working on the railroad' for your current occupation or profession? Then smile, there's still a way to live your dream and it's fun!

While you may not be the engineer, the Society's Car Attendant program enables you to be an actual member of the Fillmore & Western or Metrolink train crew! That's right, you can, with the appropriate training, qualify as a SCRVRHS Car Attendant and ride the rails!

Car Attendants play several important roles on board the train. Primarily they are responsible for passenger safety. Secondly they serve as docents, explaining the railroad; its history; the equipment (including cars and engines); and both represent and generate interest in the Society. Finally, during and after each run, they are responsible for keeping the cars clean and presentable.

Basic training requirements are the same for any Fillmore & Western crew member. After all, working with 'big' trains is serious business. All Car Attendants must know and carry with them the F&W General Safety Rules. They must also learn the SCRVRHS Car Attendant Manual, a document praised by the Metropolitan Transit Authority which operates Metrolink. Certification

in CPR is also required. Additionally they must also know the train chain-of-command from the Conductor on down. Car Attendants also provide their own uniforms, 'grip', and safety equipment.

Half of the fun of working a car is meeting and talking with passengers and listening to their train stories, many of which happened on the Santa Paula line. The other half is being able to work with and learn from professional railroad con-

ductors, brakeman and engineers. And occasionally Car Attendants have been invited into the cab of the steam engine or F&W diesel for a run down the line as a reward for their service! A few have been known to actually blow the whistle (just like on that model railroad layout).

Willing to take the challenge in exchange for the thrill of 'working' the rails? Are you Car Attendant material? Give it a try! Call either one of the Society's Car Attendant Crew Chiefs, Rick Swanson (805) 492-5921 or Chris Robson (805) 388-0311 for more information. The 4th of July week-end is approaching. The steam engine is firing up and Car Attendant trainees are welcome!

### Western Railroaders' Hall Of Fame and The Pacific Bus Museum

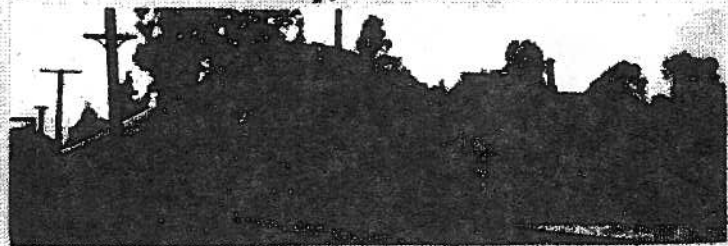
In conjunction with

### Santa Clara River Valley Railroad Historical Society

Proudly present a Historic Motor Coach Tour to



### Orange Empire Railway Museum's Fall Rail Festival -Sunday, October 29-



Our trip will depart aboard a historic 1954 air-conditioned, restroom equipped, Scenicruser from Fillmore's Central Park at 8:00 A.M., with a buffet breakfast stop enroute (cost of meals not included). The coach will depart Orange Empire Railway Museum at 5:00 P.M. General Admission to the Festival is \$10, children 6-11 \$7, and under 6 free (not included in fare).

For more information Call Stephen Schwarzwald at (818) 763-3454

\*Reservations must arrive by October 10.\*

Yes I'm interested in riding the Historic Scenicruser to the Fall Rail Festival. Please send me: \_\_\_\_\_ tickets. I am enclosing a check for \$ \_\_\_\_\_ (\$32.00 for each person) made payable to "Western Railroaders' Hall of Fame."

Name (please print) \_\_\_\_\_

Address \_\_\_\_\_

Day Phone Number ( ) \_\_\_\_\_

Night Phone ( ) \_\_\_\_\_

Send to: Historic Scenicruser c/o Stephen Schwarzwald  
4086 Cody Road, Sherman Oaks, CA 91403

\*Paid Reservations received after Oct. 10, will be placed on a guaranteed refund waiting list.\*



# BAR-B-Q, BEANS, AND THE BOTTOM LINE

by Dave Jeffery

Tri-Tip sandwiches and Bar-B-Que beans? You bet! But the SCRVRHS Bar-B-Que committee is seeking volunteers to serve up these dishes and generate revenue (\$) for the Society. We need your participation during this July 4th weekend steam train event in the City of Fillmore. As we typically have done for each open public train operation event, the Society will again be sponsoring the BBQ operation July 1, 2, and 3.

The BBQ events have been successful fund raising efforts for the Society. The proceeds are disbursed through the general fund toward the variety of cash-starved-projects including RAILNEWS, postage, supplies, and most important, the turntable project.

So, whether you can boil water (outside of a locomotive boiler that is) or not, there will be experienced fellow Society members to provide you 'hands-on' training throughout the day. You'll find this to be a great way to network with Society Board members, SLE staff, and other members all talking about trains as they work. The more help, the easier the job, but always great conversation.

BBQ operation begins at 9:30 am at Fillmore's Central Park, across the street from the train boarding area. The BBQ generally is open throughout the day and ends with the final train run, approximately 4:30 pm.

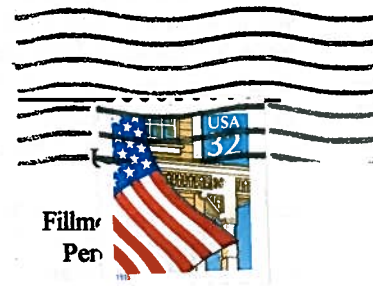
The Society and BBQ staff realize and respect your personal and family commitments. If however, you can donate a half or full day of your time, we would graciously appreciate it. For further information or scheduling of time please call either Dave Jeffery (805) 525-0603 or Paul Haase at (805) 524-1607. We anxiously await your calls and the opportunity to meet you. We as a Society need the revenue the BBQ generates. If you can't donate cash to the turntable drive, your time is just as valuable if not worth more! Call now.



## RAIL NEWS



**Santa Clara River Valley  
Railroad Historical Society, Inc.  
448 Sespe Avenue  
Fillmore, California 93015**



Steven D. Pierce  
Post Office Box 7025  
Ventura, CA 93006

### Inside This Issue:

<b>SPECIAL VOLUNTEER ISSUE</b>	
<b>Membership: Keeping Up With Everything</b>	<b>page 2</b>
<b>Car Attendants Are More Than Just 'Pretty Faces'</b>	<b>page 3</b>
<b>Bar-B-Que Crew Contributes To The Bottom Line</b>	<b>page 4</b>