



TRAIN ORDERS

Scheduled and Unscheduled Society Events, Timely News, and Notes of Interest

NOVEMBER – 2002

(805)524-2254

(888)340-4182(tollfree)

WWW.SCRVRHS.COM

(805)524-0676(fax)

CABOOSE ATSF 999-474 IS HERE

Tuesday, October 14, 2002 I received a call that we would be able to pick up our caboose which was formerly owned by the Martin Smith Foundation in Oxnard. This is the car which they had donated to us earlier this year. The Caboose is a C-2 type which was originally built in the 1940's, but was re-built in February of 1967, and has been completely repainted, reupholstered, and relettered on the inside. We are very proud to have it. We need to thank Dave for setting up the donation and delivering it, plus Dale Wyant for his help in making sure after each move it was put behind a good fence so that it would be kept in the mint condition. All we need now, is a bit of elbow grease, a few rags, and it will look as new.

CAR ATTENDANT PROGRAM

The Railroad always needs Car Attendants. Many of you would like to get into the program and perhaps aren't quite sure how to get it started. Larry Stremole is the man in charge of this program. His phone number is [REDACTED]. There have, in the past been two ways to be one of these "riders of the rails." 1) We have had classes

to show you what to do and how to do it as far as greeting, putting step boxes down, assisting people on and off the train, and all of the protocol which goes with it. 2) On the Job Training has probably been the most useful. There is one item that Fillmore and Western does require. That is a current CPR card. You must take a class and become certified. In Fillmore, that is not difficult, as at least once per month there is a CPR class offered by the Assistant Fire Chief Al Huerta. To reach him just call (805) 524-0586 or (805) 524-1500 ext. 320. We welcome you to join us in this program. It is very enjoyable.

RAILROAD RESTORATION

Many people enjoy various types of restoration of rail cars, locomotives and so on. One of the benefits you have upon joining our organization is that you have that opportunity. We certainly encourage you to do so if that is your desire. Please contact the Fillmore and Western Railroad (Dave Wilkinson) for more information.

MILEPOST PROGRAM REVIVED

Once again, the Society will be installing milepost markers along the track on it's south side, this



time between Fillmore and Piru. Mileposts 428 and 429 will be placed as soon as Fillmore and Western RR have completed repairs of the track bed. This program has been a successful fundraiser, because sponsors have donated \$200.00 to the Society's Turntable Project for each milepost. Each donor who sponsors a milepost will have their name(s) engraved on a brass plaque which is permanently attached to the milepost. If you are interested in sponsoring a milepost, leaving a permanent legacy on the railroad, call Fred Ervast, (805) 328-5307, or e-mail him at fastfinn@aol.com.

INTERPRETIVE CENTER

Our Interpretive Center now has a brand new sign. The old Fire Department Sign sign has been removed and our new sign put on the first week of October. It looks great. Last week-end a crew of volunteers joined together to clean the walls and get ready for a paint job on the inside. We hope to be finishing the inside so that we will be open for the month of December. We have, in fact moved the monster locomotive bar-b-que machine to the Interpretive Center for your viewing.

TURNTABLE

Our Turntable Plans, which have been in the Los Angeles Division of CalTrans since June will now be staying a little longer. It now seems that even though the City of Fillmore did an archeological

study on the whole block of the railroad corridor between Central and Mountain View and Santa Clara and Main Streets, CalTrans wants us to do another one. This will take from two to six months of time to complete and cost us \$1,800.00. After that, we are told, we should be ready to go to bid.

PUMPKIN TRAINS

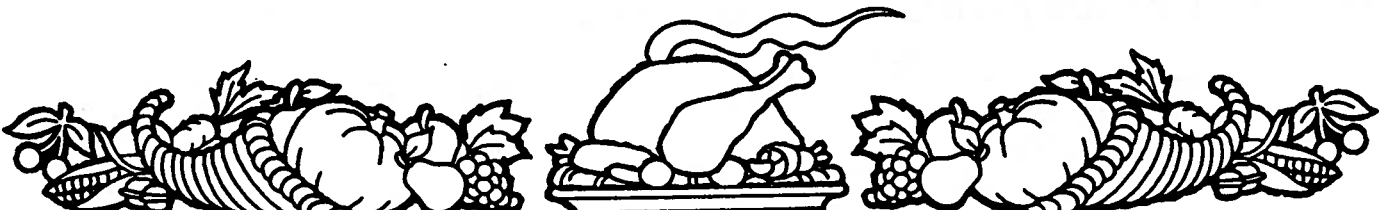
The Pumpkin Trains were again a success for 2002. I would like to thank all participants including those who attended the Thursday evening work parties and Bar-B-Ques, the Saturday and Sunday times at the Patch, plus the Car Attendants who helped to shuttle the people to the correct spots. The month of October is always a busy one for us.

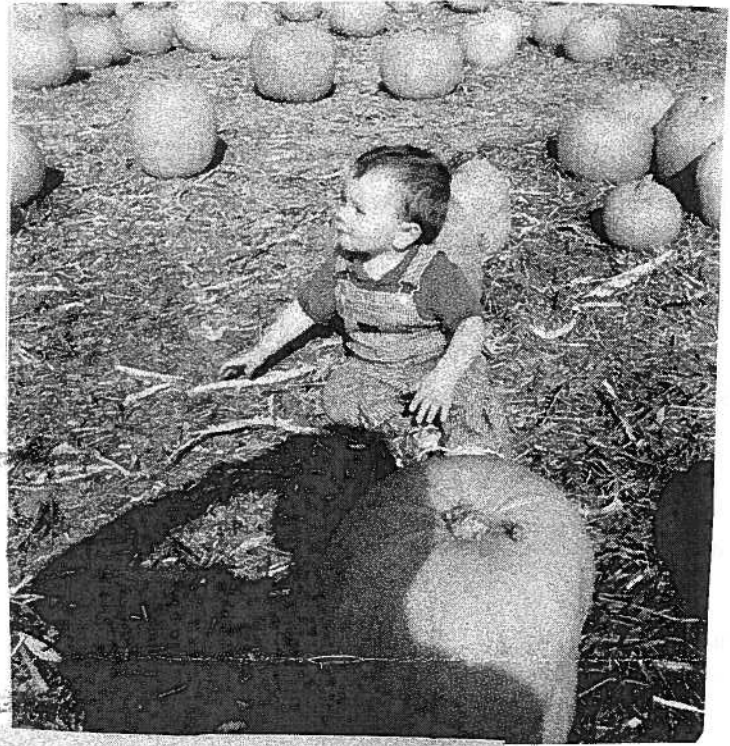
CHRISTMAS TRAINS

Again this year at Christmas we will be having Christmas Tree Trains. Also, at the last General Meeting it was decided that our Christmas Party will be held on-board the train, as it has been done in the past. A date has not been decided.

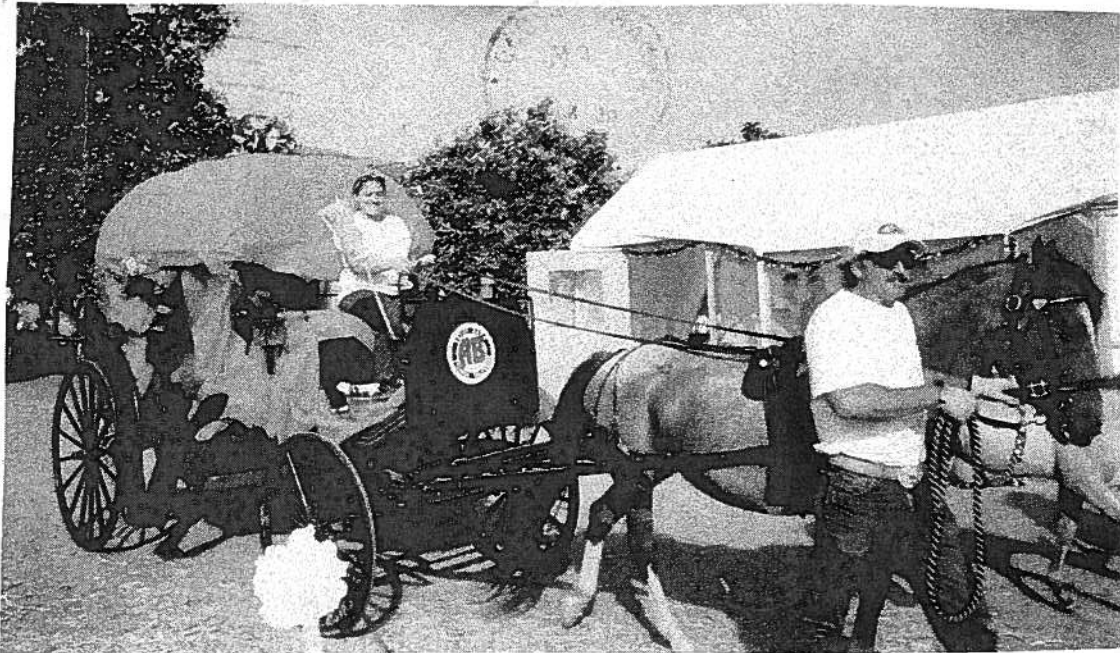
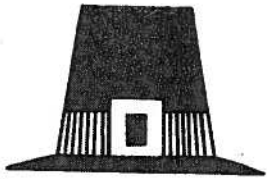
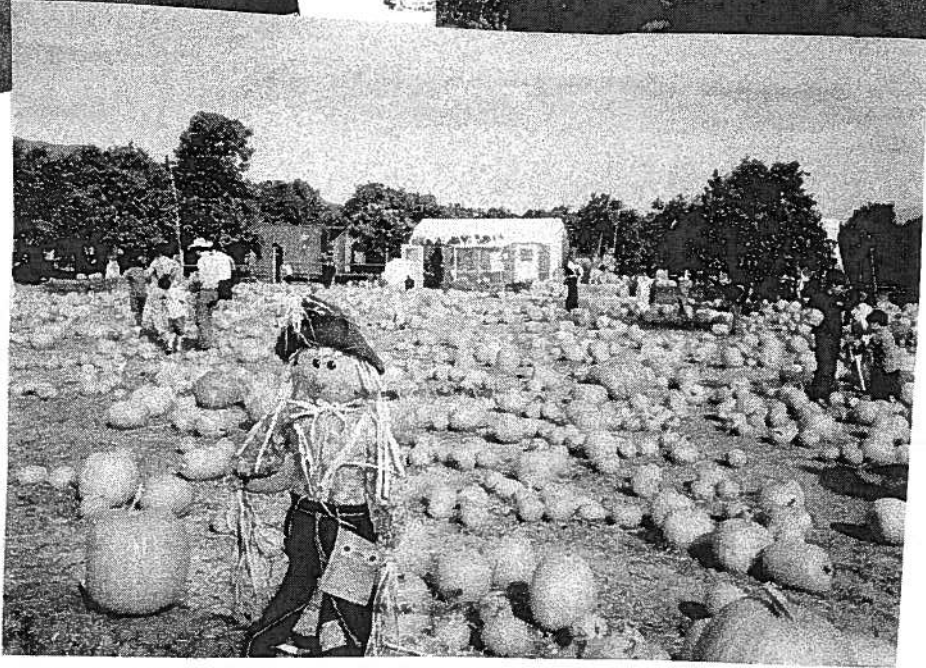
RAILROADS IN HAWAII

The program for the November 13th meeting at the Visitors' Center will be a presentation by Fred Ervast on the Oahu Railway & Land Co. The talk, given by Fred (Fireball) Ervast, will describe how the railroads were and integral part of the Hawaii economy, even after World War II. So, come join us on the evening of November 13th, and the Society will include Hawaiian refreshments. No leis.





Pumpkin
Patch
2002



Dispatch Board November, 2002

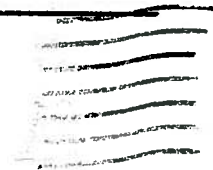
Join us for breakfast on Saturday mornings
at 8 am at the Fillmore Café on
on Santa Clara Street across from City Hall
See New Telephone Numbers on Front of Train Orders

- Nov. 2nd & 3rd Saturday and Sunday Trains
Car Attendants Needed
Call Larry Stremole at ~~408-6272~~
for more information.
- Nov. 6th SCRVRHS Board Meeting - Visitors' Ctrrer
455 Main St. 7pm.
- Nov. 9th & 10th Saturday and Sunday Trains
Car Attendants Needed
Call Larry Stremole at ~~408-6272~~
for more information.
- Nov. 13th General Meeting - Visitors' Center
455 Main St. 7pm Railroads of Hawaii
- Nov. 16th & 17th Saturday and Sunday Trains
Car Attendants Needed
Call Larry Stremole at ~~408-6272~~
for more information.
- Nov. 23rd & 24th Saturday and Sunday Trains
Car Attendants Needed
Call Larry Stremole at ~~408-6272~~
for more information.
- Nov. 28th Thanksgiving Day
- Nov. 30th & Dec 1st Saturday and Sunday Trains Christmas Tree Trains Start
Car Attendants Needed
Call Larry Stremole at ~~408-6272~~
for more information.



Train Orders

Santa Clara River Valley
Railroad Historical Society, Inc.
P.O. Box 492
Fillmore, CA 93016-0492



John & Peggy Gartman
4504 N. Ventura Ave.
Ventura, CA 93001

