



# TRAIN ORDERS

Scheduled and Unscheduled Society Events, Timely News, and Notes of Interest

NOVEMBER, 2000

[www.scrvrhs.org](http://www.scrvrhs.org)

## The Story of the #1205 'UP National Embassy'

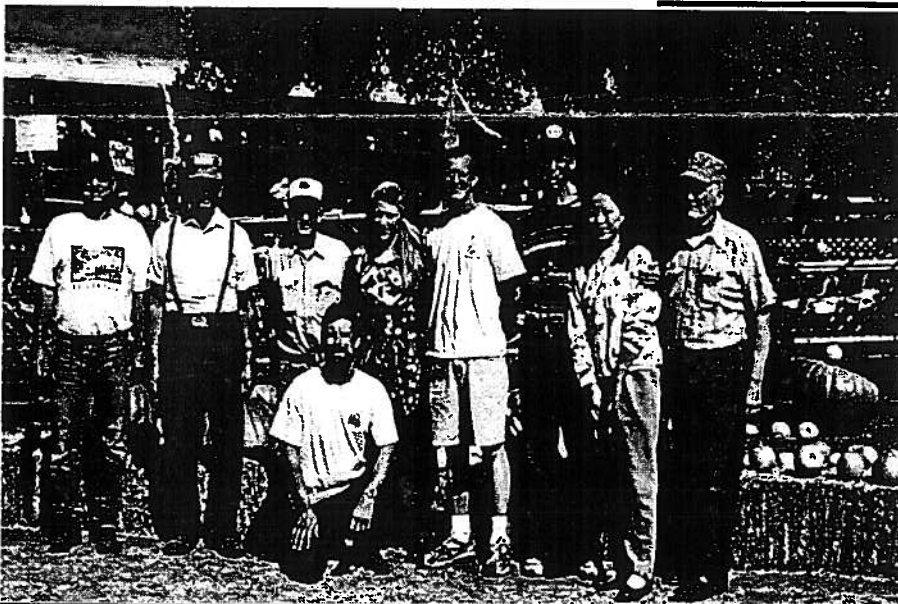
By Jeff Trimble

The Pullman Standard built the National Embassy for the Union Pacific Railroad in late 1955. This car was built to run on the City of Saint Louis train, which was co-operated with the Wabash Railroad. These trains ran between Saint Louis, Missouri, and Los Angeles. The UP had 12 of the National Series, and the Wabash had 3. In the late 1960's, the City of St. Louis train was cancelled, and the UP Nationals were looking for a new use. The Nationals saw some use on the UP Portland Rose, and the UP ski train to Sun Valley Idaho.

By the fall of 1971, all 12 UP Nationals were auctioned off. The Pacific Rail Society won the bid for the National Embassy. But due to the



As reported in October, the F&W installed the Society's turntable approach switch in consideration of all the Car Attendant volunteers provided to the railroad over the past couple of years. Thanks Attendants! Your work paid off.



Many thanks to some of our Pumpkin Patch volunteers pictured above (l to r): Gary, 'Fireball' Fred, Paul (SCRVRHS President), Steve, Carol, Ethan, Mr. & Mrs. Ed Schoepke, and Kenny Z. To all the others not pictured, a big thanks to you too! Each of five weekend trains carried about 460 people over four weekends. Whew!

lack of serviceable wheels, the PRS never put the car in service. In 1978, Bill Gawzner, Miramar Hotel owner, made the Pacific Rail Society an offer they could not refuse. Mr. Gawzner owned an ex-SP Shasta Daylight car, which he wanted to trade for a sleeper car. Since the PRS already owned another National Series car, the decision was made to trade the two cars.

For many years, the National Embassy was open on Sundays for public tours at the Miramar. Unfortunately Mr. Gawzner passed away in 1984 and from 1984 to 2000 the car sat virtually neglected. The new Miramar owners planned to remodel the hotel and a new home was sought for the classic Pullman sleeper. With the help of SCRVRHS and PRS member, **Larry Jennings**, the car was donated to SCRVRHS.

- See back page

# EVENT CALENDAR

## NOVEMBER 2000

Join us for breakfast on Saturday mornings at 8am at the Fillmore Cafe on Santa Clara Street across from City Hall.

- 1st** 7:00 pm - Board of Directors meeting.  
Fillmore Fire Department: 743 Sespe Place, Fillmore
- 4th & 5th** F&W Fillmore/Santa Paula Trains  
Car Attendant Volunteers needed  
Call Larry Stermolle at 805 497-6373
- 8th** **General Membership Meeting**  
"Copper Canyon" with Bob Mahan  
Senior Center, 551 Santa Clara St.  
(between 'A' and Central at Palm) in Fillmore  
7:00 pm - Refreshments
- 11th & 12th** F&W Fillmore/Santa Paula Trains  
Car Attendant volunteers needed  
Call Larry Stermolle at 805 497-6373
- 18th & 19th** F&W Fillmore/Santa Paula Trains  
Car Attendant volunteers needed  
Call Larry Stermolle at 805 497-6373
- 25th** Annual F&W Santa Special Night Steam Train  
(no passengers) See [www.fwry.com](http://www.fwry.com) for details
- 25th & 26th** F&W Fillmore/Santa Paula Trains  
Car Attendant volunteers needed  
Call Larry Stermolle at 805 497-6373

- Continued from front page

On February 16, 2000 #1205, the National Embassy, was hoisted from its home of 22 years, onto an OST truck, for a ride to its new Fillmore home in the F&W yard.

Since its arrival, some carpet has been relayed in the hall, and several windows have been replaced, yet the car is in near original condition. Soon, the car will undergo some \$5,000 in needed roof repairs, and later, an exterior paint job. In all, this classic example of the final days of passenger rail travel is an excellent addition to the Santa Clara River Valley Railroad Historical Society.

### National Embassy Pullman Sleeper

Name and Number:	National Embassy #1205
Company Built For:	Union Pacific Railroad
Construction:	Aluminum
Type:	Sleeper:
	6 Open Section Berths
	4 Bedrooms
	6 Single Roomettes
Seats:	26
Builder:	The Pullman Company
Build date:	Late 1955
Length [ft-in]:	85-0
Weight [lbs]:	141,665



HAPPY THANKSGIVING



## TRAIN ORDERS

Santa Clara River Valley  
Railroad Historical Society, Inc.  
448 Sespe Avenue  
Fillmore, California 93015



John & Peggy Gartman  
4504 N. Ventura Ave.  
Ventura, CA 93001