



TRAIN ORDERS

Scheduled and Unscheduled Society Events, Timely News, and Notes of Interest

OCTOBER, 2000

www.scrvrhs.org

ATTENTION GHOULS AND GOBLINS, THE FAMOUS PUMPKIN PATCH IS OPEN

Each October the Fillmore & Western provides a fund-raising opportunity to SCRVRHS and a chance to share in the celebration of Halloween. The F&W Pumpkin Liner trains are one of the most popular activities produced by the railway. The Society shares in the profits of the pumpkins themselves as well as the liquid refreshments sold at the pumpkin patch. These daytime fund raising activities span four weekends in October. It's fun, the faces of the kids are worth a million bucks, and all the passengers are happy.

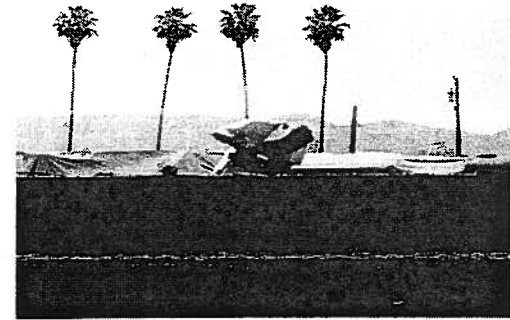
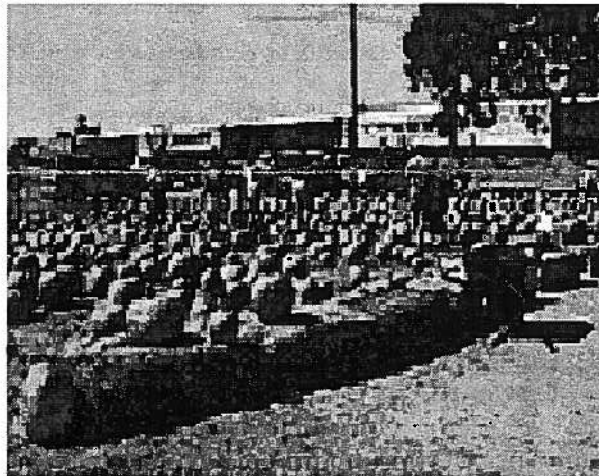
Here's a few ways to have fun for the whole family this fall and support your rail society at the same time!

First and foremost, take the family on a train ride, see the 4-H Club petting zoo, and buy your Halloween pumpkins from the Society. Your kids, grandkids, nieces and nephews will all enjoy the afternoon in the country (but beware of the witch).

Second, help set out pumpkins every Thursday evening in October and share in a pot luck dinner (meet at the Fillmore Senior Center at 6pm).

Third, spend a day or two out of the eight days available to assist in selling pumpkins and soft drinks. The more help the merrier! Everyone should be able to pull at least one day out of his or her busy schedule to help out (and we all are busy, right?) Call **Paul Haase**, Society President at (805) 524-1607 with your availability.

Fourth, all those train passengers need help in boarding and maintaining safety aboard the trains, especially with excited children. That's what our professional Car Attendants are trained to do. The F&W will be running two trains each day in October: the Pumpkin Liners and the regularly scheduled train to and from Santa Paula. That means twice the Car Attendants. Although the dedicated Car Attendants that have been assisting lately have been a big help to the railroad, they will be out numbered if their fellow Society buddies don't help them out. We need you! This presents an excellent opportunity for newer Car Attendants to increase their experience and work along side some 'seasoned' veterans! Call our Car Attendant Program Chiefs **Larry** or **Jeanne Stermolle** at (805) 497-6373 to reserve your date and train. It's fun! For more information about the Pumpkin Liners visit the Fillmore & Western website at www.fwry.com.



Jim Dunchew, welder, puts a professional touch to heavy duty repairs on our turntable. Reinforcement, repair and the filling of holes were in order.

Grant Money Secured Turntable Installation To Begin In Earnest

As you read this, the turntable approach switch should be in the process of installation on the Fillmore & Western north track near Mt. View Street. Welding repairs to the turntable have finished and final painting is underway. A soil compaction test bid has been awarded and the work completed. SCRVRHS Director **Roy Payton**, a civil engineer, has finished and the City has approved, our building plans. The Fillmore City Council has approved our lease for the Railroad Interpretive Center (RIC) project. And finally, thanks to all of the past volunteer work and generous tax deductible donations, the Society has produced the \$62,600. in matching funds necessary to secure two government grants of about \$800,000. That means "High Ball", the Society is moving full steam ahead!

Here's what the immediate future holds. Once the approach switch is installed, we will begin with installation of the support systems: water, electrical, storm drains, curbs and sidewalks. In November, the City will extend the concrete promenade and wrought iron fencing, east to Mt. View Street. Finally, a pit will be dug and lined in preparation for the turntable. But before the table can go in, we will have the turntable motor rewound to meet U.S. rather than its current Canadian standards. There's still lots to do but this young Society has proven it's up to any task!


EVENT CALENDAR

OCTOBER 2000

Join us for breakfast on Saturday mornings at 8am at the Fillmore Cafe on Santa Clara Street across from City Hall.

4th 7:00 pm - Board of Directors meeting.
Fillmore Fire Department: 743 Sespe Place, Fillmore

7th & 8th *Pumpkin Patch & Pumpkin Liner Trains*
AM & PM Volunteers + Car Attendants needed
Call Larry Stermolle at 805 497-6373

11th  **General Membership Meeting**
"Ghost Railroad of Bodie" with Fred Ervast
Senior Center, Santa Clara St.
(between 'A' and Central) in Fillmore
7:00 pm - Refreshments

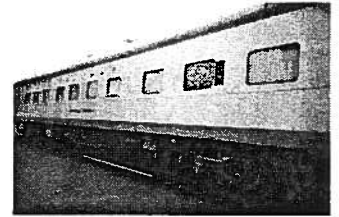
14th & 15th *Pumpkin Patch & Pumpkin Liner Trains*
AM & PM Volunteers + Car Attendants needed
Call Larry Stermolle at 805 497-6373

21rd & 22th *Pumpkin Patch & Pumpkin Liner Trains*
AM & PM Volunteers + Car Attendants needed
Call Larry Stermolle at 805 497-6373

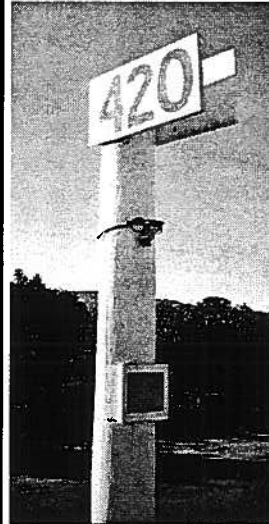
28th & 29th *Pumpkin Patch & Pumpkin Liner Trains*
AM & PM Volunteers + Car Attendants needed
Call Larry Stermolle at 805 497-6373

AROUND THE ROUNDHOUSE . . .

OUR #1205 PULLMAN - is undergoing some much needed professional repair work. The car has suffered some 12 holes in its roof caused by corroded aluminum. Some holes go completely through to the interior. Needless to say, water damage has been a problem. The effects of past interior damage have been repaired by Society volunteers led by **Steve Pierce**. But to prevent a reoccurrence this winter, roof repairs are a necessity. Total cost of the repairs will exceed \$6,000. This is why your participation in the pumpkin patch and other fund raisers is so important. And very necessary! Of course, if you can't give of your time, tax deductible cash donations will do nicely.



HERE'S LOOKING AT YOU KID! - (attention!)



Seems like F&W milepost marker 420, erected as a fund-raiser by SCRVRHS and sponsored by Car Attendant Chief **Larry Stermolle**, had one of three things happen to it recently. You be the judge. It was either 1) viciously attacked by vandals; 2) decorated early for Halloween or; 3) has taken on the look and personality of its sponsor. Whatever is happening, it's just like Larry, scary!!



TRAIN ORDERS

Santa Clara River Valley
Railroad Historical Society, Inc.
448 Sespe Avenue
Fillmore, California 93015



John & Peggy Gartman
4504 N. Ventura Ave.
Ventura, CA 93001