



TRAIN ORDERS

Scheduled and Unscheduled Society Events, Timely News, and Notes of Interest

SEPTEMBER, 2000

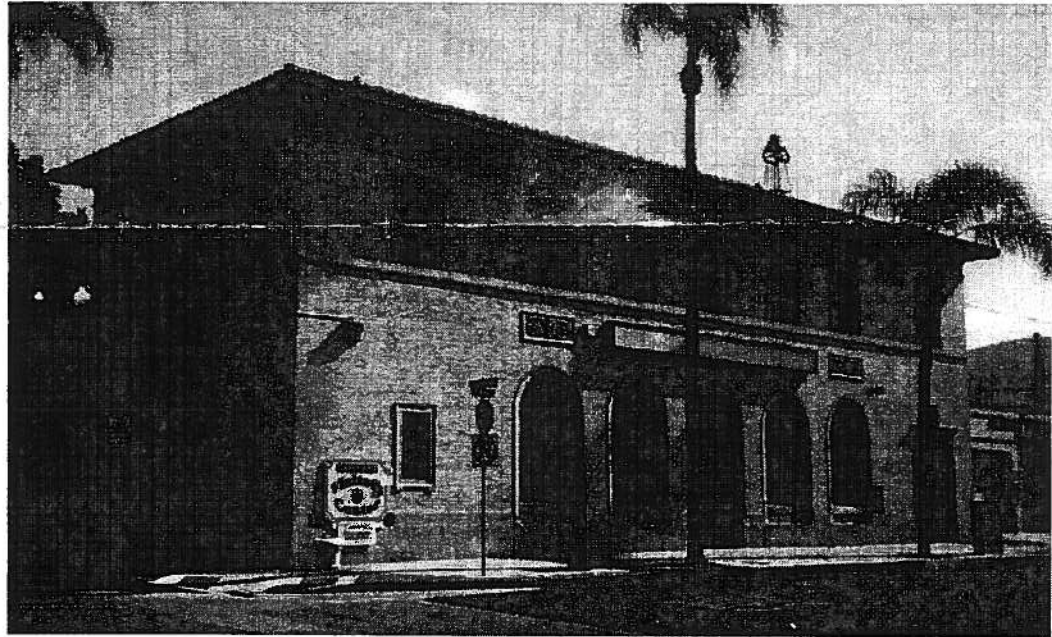
www.scrvrhs.org

Corriganville and Santa Susana Depot Field Trip

One of the fun benefits of belonging to the Society is the opportunity to participate in organized field trips. We travel to locations that one might not otherwise either be aware of or would be able to go to on their own. Recent field trips included: an Amtrak San Diegan daytrip to San Juan Capistrano; a visit to the Metrolink repair facility and dispatch center in Los Angeles; separate Metrolink trips to Lancaster and Riverside; a chartered bus trip to the Orange Empire Rail Festival; and most recently, breakfast in the former Santa Fe diner #8004 at the Mira Mar Hotel in Montecito.

Mark your calendars for the next field trip, Saturday, September 23! Join us for any segment in the day's activities. The day begins with our usual 8 am Saturday morning breakfast at the Fillmore Café on Santa Clara Street. At 10:00 am we'll meet in the parking lot of the former Corriganville movie set and theme park in Santa Susana. There, SCRVRHS member and Corriganville preservationist Steve Pierce will take us on a one hour walking tour of the grounds and brief us on plans to restore this original southern California cowboy landmark. At noon, we'll cross the railroad tracks and visit the recently restored former Southern Pacific Santa Susana depot. We'll experience a special railroad swap meet being conducted that day, tour the station, and enjoy the HO scale model railroad layouts. It's all free! Join the fun!

To reach Corriganville go south on the Kuehner Drive exit from the 118 Simi Valley Freeway. Go south to Smith Road. Turn left to the Corriganville parking area at the end of the street. To reach the depot, continue on Kuehner Drive, over the bridge that spans the railroad tracks, and turn right. The depot is on your right. See ya there!!



Visitors Center: Just Another Santa Barbara Bank & Trust 'Legend of Service'. Thank You

For over the past two years both we as a Society and the general public have been blessed with the community spirit and generosity of Santa Barbara Bank & Trust. It was their bank building that they donated the use of to our Society to house our Railroad Visitors Center. Patrons young and old and from far and wide enjoyed the artifacts, train layouts, library, and friendly docents. It served as a meeting place and a source of funds for Society activities. It anchored the Fillmore downtown and drew tourists to local shops and eateries. It was a visible representation of what this seven year old railroad group has accomplished. We truly appreciate all that you have done for us SBB&T!



EVENT CALENDAR

SEPTEMBER 2000

Join us for breakfast on Saturday mornings at 8:00 am at the Fillmore Cafe on Santa Clara Street across from City Hall.

- 6th** 7 PM - Board of Directors meeting. (note location change)
Fillmore Fire Department: 743 Sespe Place, Fillmore
- 9th & 10th** Car Attendants for Fillmore & Western daytime trains.
1- 5 pm Saturday, 10 - 5 pm Sunday. Call Larry @ 805 497-6373

13th General Membership Meeting - Location: Fillmore Senior Center
533 Santa Clara Ave., Fillmore - 7:00 PM. Refreshments!

- 16th & 17th** Car Attendants for Fillmore & Western daytime trains.
1- 5 pm Saturday, 10 - 5 pm Sunday. Call Larry @ 805 497-6373

- 23rd** Field Trip (see page 1)
8:00 am - Breakfast at the Fillmore Cafe, Santa Clara St, Fillmore
10:00 am - Meet at Corriganville
12:00 pm - Meet at the Santa Susana Depot

- 23rd & 24th** Car Attendants for Fillmore & Western daytime trains.
1- 5 pm Saturday, 10 - 5 pm Sunday. Call Larry @ 805 497-6373

- 30th & 10/1** Car Attendants for Fillmore & Western daytime trains.
1- 5 pm Saturday, 10 - 5 pm Sunday. Call Larry @ 805 497-6373

AROUND THE ROUNDHOUSE . . .

PUMPKIN LINERS are coming! In October the Society and the Fillmore & Western turn the railroads' BBQ site into a Halloween adventure land. "Pumpkin Liner" trains take passengers to the site to pick out their Halloween pumpkins. It's great fun for the kids! But, we need a little help (like you didn't know!) We need volunteers to set out the pumpkins one evening during the week, run the cash register and refreshment stands, plus Car Attendants to man the trains to assist with passengers every weekend in October. It's a terrific fund raiser for the Society and you'll enjoy yourself. Plan on joining us for this fall event.

FIELD TRIPS - If anyone has any ideas for future field trips like our proposed trip to Santa Susana (p. 1), we'd love to hear from you. E-mail us at scrvrhs.org or mail a note to the Society at 448 Sespe Avenue, Fillmore, 93015.

HELLO? HELLO?

Last month Steve Pierce, Rick Swanson (shovels), Mike Morgan (parts man & shovel) Paul Haase (back hoe) with Jeff Trimble ('supervisor') dug a 110 foot long, three foot deep trench from a power pole to the #1119 caboose and installed PVC pipe for telephone service that was formerly in the Visitors Center. It was sunny and only 98 degrees! Just one problem: they accidentally cut the caboose's 110v power line! Oops!!



TRAIN ORDERS

Santa Clara River Valley
Railroad Historical Society, Inc.
448 Sespe Avenue
Fillmore, California 93015



John & Peggy Gartman
4504 N. Ventura Ave.
Ventura, CA 93001

